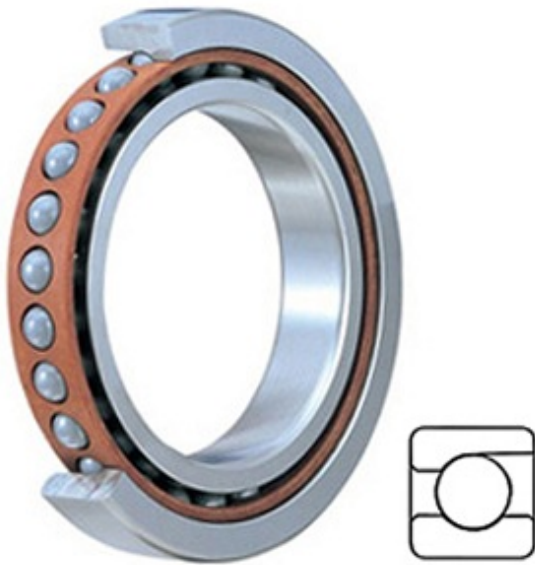




# TIMKEN BEARING MFG.CORP

0.984 Inch | 25 Millimeter x 2.047 Inch | 52 Millimeter x 0.591 Inch | 15 Millimeter TIMKEN 3MM205WI SUM Precision Ball Bearings



Bearing No. 3MM205WI SUM

3MM205WI SUM Bearing 2D drawings and 3D CAD models

Category	Precision Ball Bearings
Inventory	0.0
Manufacturer Name	TIMKEN
Minimum Buy Quantity	N/A
Weight	0.127
EAN	0087796022850
Product Group	B04270
Enclosure	Open
Precision Class	ABEC 7   ISO P4
Material - Ball	Steel
Number of Bearings	1 (Single)
Contact Angle	25 Degree
Preload	Medium
Raceway Style	1 Rib Outer Ring
Cage Material	Phenolic
Rolling Element	Ball Bearing
Mounting Arrangement	Universal
Flush Ground	Yes
Inch - Metric	Metric
Other Features	Single Row   Angular Contact   Super High Precision
Long Description	25MM Bore; 52MM Outside Diameter; 15MM Width; Open Enclosure; ABEC 7   ISO P4 Precision;



## TIMKEN BEARING MFG.CORP

	Steel Ball Material; 1 (Single) Bearings; 25 Degree Contact Angle; Phenolic Cage Material; 1 Rib Outer Ring Rac
Category	Precision Ball Bearings
UNSPSC	31171531
Harmonized Tariff Code	8482.10.50.28
Noun	Bearing
Keyword String	Angular Contact Ball
Manufacturer URL	<a href="http://www.timken.com">http://www.timken.com</a>
Manufacturer Item Number	3MM205WI SUM
Weight / LBS	0.28
d	0.984 Inch   25 Millimeter
D	2.047 Inch   52 Millimeter
B	0.591 Inch   15 Millimeter